

# Future P.O.S.



Ban-Koe Companies 1-800-969-9633  
www.bankoe.com POS@bankoe.com

## LET US SHOW YOU THE FUTURE...



Your order-entry screen is totally configurable and flexible enough to enhance it with graphical bitmaps, various sizes, fonts, colors and more. Notice the beer buttons on this screen allow real-time quantities available. This prevents servers from overselling the "special of the day", bottles of wine or bottled beer.

PROVIDING AFFORDABLE HOSPITALITY SOLUTIONS  
WITH TODAY'S CUTTING EDGE TECHNOLOGY

# OUR COMPANY PHILOSOPHY

Cutting Edge Solutions is a Butler, PA based company specializing in the development of restaurant software. We do not sell hardware like other POS companies but dedicate 100% of our time in making the best available software. Started in 1995, Cutting Edge Solutions prides itself on producing a cost effective product without sacrificing quality or functionality. While other companies charge two or three times as much for their "stripped down" software, we offer EVERY feature that we've incorporated into our product for one low price. If you compare Future POS feature for feature to any other Windows-based system, you'll find that NOBODY else offers so many features at such a reasonable price.

## Pizza Style Modifiers

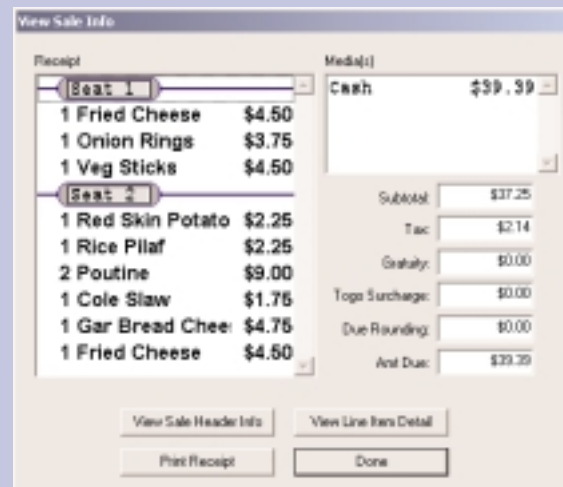


"Pizza-style modifiers" allow the operator to see three windows of modifiers and select the desired choices. This is faster and easier for the serving staff to input orders while reducing training time.

## Register Screens Maintenance



This powerful but simple way to create your screens allow the end user to configure buttons and menus wherever they are needed. Other systems force you into predefined "screen layouts"—with Future POS, you can create buttons in any location and build a screen customized to the needs of each installation. No more "canned" screens—create your own screen layout in five minutes!



HISTORICAL DATA

## Developed by Professionals

With well over a decade of software development experience, we pride ourselves on producing a product of the highest quality. The entire package has been written using 32 bit Microsoft Visual C; not because it's quicker to develop in, but because it's the quality of the end product that matters. The result is a rock solid P.O.S. package whose speed runs circles around the competition. While other companies choose their development platform (such as Visual Basic, FoxPro, or Delphi) based on development time, we feel that it's more important to do it right than do it fast. I'm sure most store owners would agree - especially during a busy Friday night dinner rush!



Fingerprint identification provides a lock-tight security measure for signing in, performing voids, clock in's, etc.

## Historical Data

Future POS can retain history on activity, check, timecard detail, reservations, and more. With the proper hardware, you could retain nearly 28 years of historical data! With the powerful electronic journal report, closed checks may be recalled as far back as you have history archived, and you can see what was ordered, how it was paid, the time and date, the operator, the person who settled the check, and more. You also have the ability to search checks for voids, refunds, items, credit cards, and more!

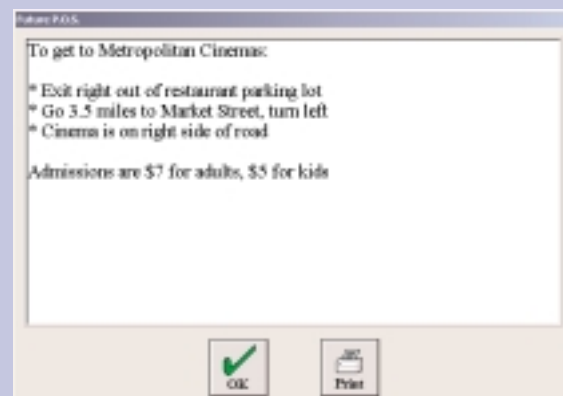
## Gift Certificate Tracking



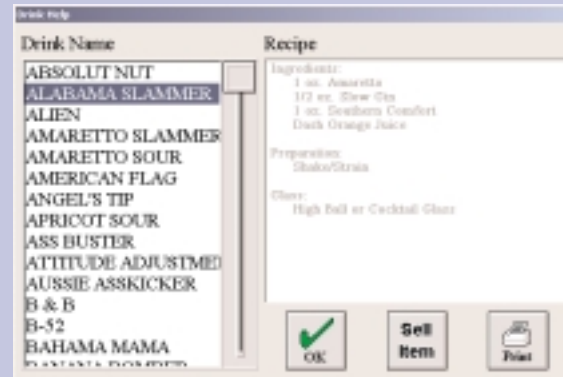
Gift certificates can be tracked through the system—whether printed on an 80 column printer or as the more convenient method, a magnetic card. With the magnetic card, the number is stored in the system and the dollar figure attached to it; the card is more convenient for the customer to carry and provides advertising as the restaurant's name can be printed on the card.

All gift certificates sold, destroyed, and redeemed are stored in the gift certificate file for historical reference. If a card is lost, it can be destroyed and a new card can be issued!

REGISTER HELP



DRINK HELP



## Drink Help and Register Help Screens

With the drink help function, a bar or restaurant owner can include the recipes for mixed drinks or cocktails, so a recipe book is no longer required; just go the screen and look it up! The drink can then be automatically rung from the screen to save time.

Register help screens are available for anything that might assist staff—in the example, directions to the cinema can be printed and handed to the customer so they know how to get to their destination. Help screens could also be used for daily specials, promotional announcements, server closing procedures, or anything else you want to create!

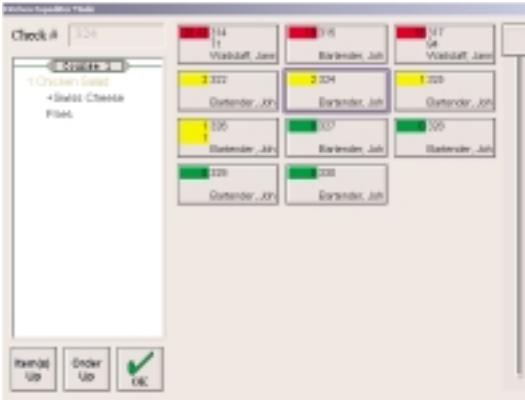
# WHAT IS INCLUDED WITH FUTURE POS?

Unlike most of our competitors, we don't "nickel and dime" the user for features that are necessary to make the system useful. Instead of charging you for "modules" that run the price of your system higher and higher, Future POS includes all of the following at NO ADDITIONAL CHARGE:

- Point-Of-Sale functions and operations with table grid
- Timekeeping and Labor Scheduling prevents clocking in if not scheduled
- Gift certificate tracking via magnetic cards or paper certificates
- Frequent diner with instant rewards
- House Accounts with personalized Customer Statements
- E-Mail to employees and E-Mail to customers alerting them of specials, events, etc.
- Credit Card Authorization (requires Datatran 162 with a phone line or NETePay software via the internet for 2-3 second authorization)
- Automatic Server Redundancy in event of a Server failure
- Kitchen Video Display Units (VDU's) with summary screen
- Customer Reservations
- Expeditor Mode to track Item Prep times
- Preauthorization for running bar tabs
- Drink Recipe Database lookup; autosell item or print recipe
- Hold and Fire items over minutes, hours, days, etc.
- Coursing with multiple print formats to remote printers
- Ingredient Tracking with food cost by item
- Driver's License Verification for Age (some states)
- Interfaces to Payroll Packages (Quick Books Pro, Great Plains, and ADP)
- Interfaces to Inventory Packages (Chef Tech spelled Chef-Tec)
- Interfaces to General Ledger (Quick Books Pro, Great Plains, and Peachtree)
- External Interfaces for Caller ID, Hotel Interfaces, Scales, Scanners, Displays, Security Cameras, and more
- Fingerprint Recognition for Clocking in, Authorizing Voids, etc.

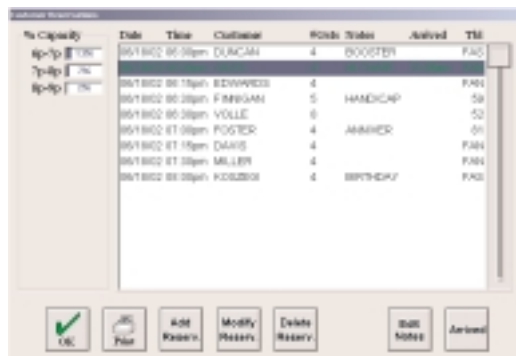
# Expo Mode

Expo Mode allows the touchscreen to be used as an expeditor in the kitchen. By simply touching the "Expo Button" on the touchscreen, the unit goes into expo mode; this allows the expeditor to recall a check (manually or by using a barcode scanner) and "bump" either the items off a work order, or the entire order. Once these items have



been prepared, the actual time the order was sent to the kitchen and the time they were bumped off the expo monitor are tracked via the Prep Time Report. This is useful for restaurant owners that want to see which items are taking too long to prepare, etc. It is also a benefit that you are not required to buy another terminal to use expo mode; simply place a button on the screen, and expo mode is up and working!

# Reservations



Reservations can be taken from any terminal, including the back office PC, for any date, including years in the future. Simply follow the prompts (date, time, customer, requirements, # in party, etc.) and the reservation is done! If a table is reserved it will show on the table grid as "Reserved" so another server cannot access that table. The reservation screen also has a column for notes such as w/high chair", "VIP" or "Birthday" plus a column for an arrival time.

# Front End Features:

- **Automatic selection of modifiers** with optional/limited selections.
- **Ability to scan items**, as well as retrieve open checks using a barcode scanner.
- **Hold and Fire items** over multiple minutes, hours, or days.
- **Ability to split a single item** between several checks.
- **Extensive Front of House reporting.** All reports can be printed or viewed, allowing the store manager to keep on touch with business while remaining on the floor.
- **Item Countdown** allows the user to see the quantity of each item on hand. The real time quantity is displayed on the item button and recommends an alternate item to the user when the quantity reaches zero.
- **Item receipt lookup.** Servers can look up an item's ingredients, providing nutritional information as well as allowing the customer to avoid foods that could cause an allergic reaction.
- **Automatic Printer Rerouting** in the event of a printer failure.
- **Customer Information** including last order and year to date purchases. User can repeat last order with the push of a button.
- **Bartenders can enter a check description** such as a customer's name when running tabs to allow faster and more accurate retrieval.
- With a fast cash button on every screen bartenders have the **ability to settle a check to a specific media** with a single keystroke. This is typically used in bar environments to speed up settlement process.
- **Virtually NO end of sale time.** In busy environments where every second counts this gives back crucial minutes, which translates into more customers being served in a timely manner.

- **Check headings** can use a standard bitmap as a graphical logo (depending on the type of printer). Check headings, order headings, and credit card authorization slips can also contain desired literal text, as well as over 50 different text fields that relate to the current sale/user/customer.
- **Credit Card Preauthorization** is useful for bar tabs in clubs. Swipe the credit card and press a preset dollar amount button or key in an open dollar amount to authorize for that tab. The name on the credit card will display next to the tab so bartenders can recall tabs by customer's name.

# Back Office Features:

- **In-store charge** (Accounts Receivable). with the ability to maintain customer charges as well as print professional looking statements.
- **Inventory Tracking** automatically subtracts from inventory as items are sold, providing accurate and up to the minute inventory management, complete with an automated reorder report.
- **Complete Online Help** — Eliminates wading through manuals to find information.
- **Integrated Time and Attendance**, with up to 11 pay rates per employee. This information can be used to produce a wage report, or exported for use by a payroll program.
- **Corporate Polling** allows you to run individual store level reports and regional store reports at a central location. Via the internet, sales data can be uploaded from each store to the central office with up-to-the-minute real time reports. In addition, this is a good way to store data offsite.
- In the event of a Server failure, a previously **designated "Backup Server"** will keep the system running until the main server can be repaired.
- Written 100% in 32 bit **Microsoft Visual C.**

# Table Grid

In addition to allowing a server to easily select which table they wish to service, the tables are color coded based on the status of the check. The number of minutes the check has been opened is displayed under the table number.

